

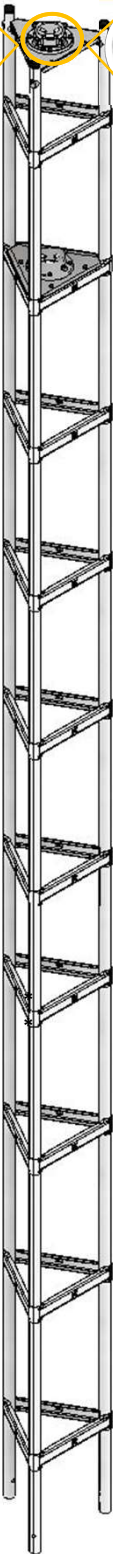
Golden Nugget – Tubular Towers

Two Top Kit Mast
Clamp Pair Options

TMCA
Up to
1.66" OD



244A
Up to
2.5" OD



We've replaced the 16 and 18 gauge top sections with our new easy to install GN Top Kit. One simple straight design and optional top kit makes our most popular consumer tower an even easier choice.

GN Top Kit includes: 2 rotor plate assemblies, 2 mast clamps & 3 leg end plugs.

Top Kit Advantages

- Eliminates need to stock both straight and top sections
- Only 3 bolt sizes for simple installation
- Convert any current or past 16 and 18 gauge section into a top with very few tools
- Easily add sections to existing installs
- Compact enough to easily stock in work vehicle
- 244A mast clamp option increases maximum mast OD range from 1.66" to 2.5"
- Greater mast range accommodates most mounted equipment
- Courier shippable - reduces transport costs and warehouse space
- Makes both sales pitch and installation more straight forward

Tower Features & Benefits

- 10 foot tubular sections with precision swaged legs for perfect fit
- New pressure tested, robot welded construction for strong, consistent, aesthetically clean welds
- Easy installation with no concrete required
- Simply anchor with drive stakes and our universal house bracket that adapts to any roof
- Mast OD range up to 2.5" diameter accommodates most mounted equipment
- Designed to support equipment up to 3ft² (0.28m²) projected wind area, mounted up to 2.5 sections above house bracket.
- Unguyed, unobtrusive tower solution up to 60'
- Made in Canada using North American steel

Load Limits

- * Designed to support equipment up to 3 square ft. (0.28 m²) projected wind area, mounted not more than 2 sections above house bracket.

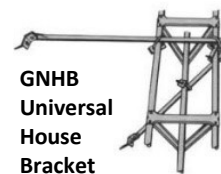
Caution: Guy wires must be used for larger loads or greater heights above house bracket. However, the towers have not been tested to CSA standards CSA-S16 and CSA-S37-13 for loading larger than what is indicated above.

Climbing Limits

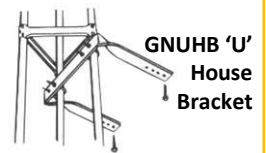
- ** Designed to withhold impact load of a climber in case of a fall in accordance with CSA-S37-13.

* Tower load limits are based on survival, and cannot be stamped by a licensed engineer
** Towers have not been tested to be in compliance with other sections of CSA-S37-13.

Accessories



GNHB
Universal
House
Bracket



GNUHB 'U'
House
Bracket



GNBP
Base
Plate



GS-GN
Guy
Station



CS-GN
Climb
Shields



**Drive
Stakes**



GN3HU
Hinge-Up
Base

WADE ANTENNA'S ONGOING POLICY OF CONTINUING DEVELOPMENT MAY RESULT IN SPECIFICATION CHANGES TO ITS PRODUCTS

Product Features

Features

- "X" brace with beaded channel leg design
- Enhancements made to both leg profile and taper allow for easier installation and improved tower structure
- High strength galvanized steel construction
- Heat treated aluminum rivets
- Top sections tapered
- Universal house bracket
- No concrete required
- Designed to withhold impact load of a climber in case of a fall in accordance with CSA-S37-13.*

See installation instructions for more information

**Load Limits

Designed to support equipment up to 3 square ft. (0.28 m²) projected wind area, mounted not more than 2.5 sections above house bracket.

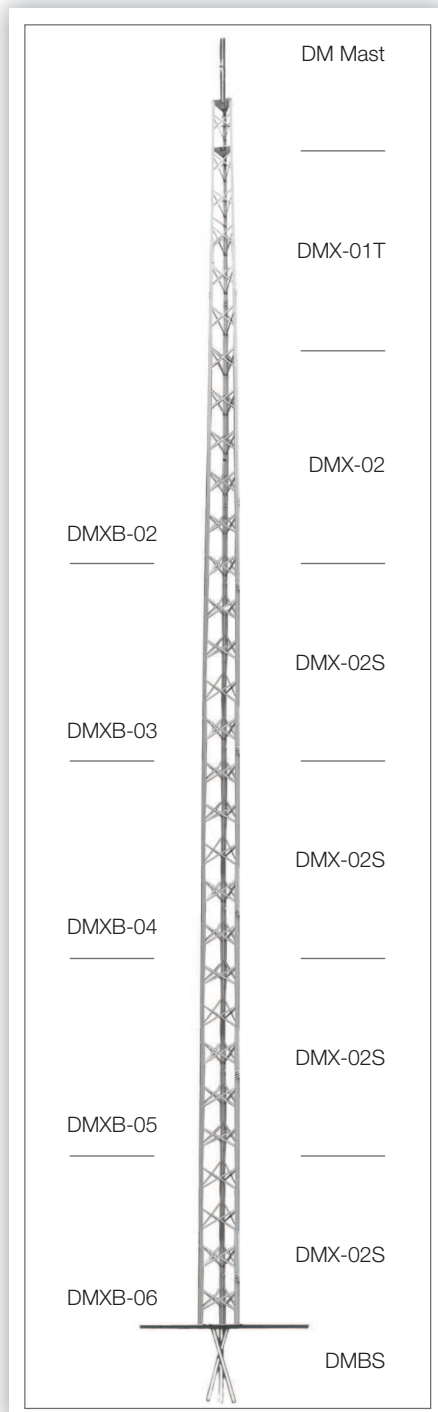
Caution: GS-123 guy stations available for larger loads or greater heights above house bracket.

Tower Packages

DMXB tower packages come complete with tower sections, DM mast, top plate, rotor plate, BP2S base plate, TMCA mast clamp assembly, DMBS drive stakes and DMXHB universal house bracket. Height includes mast.

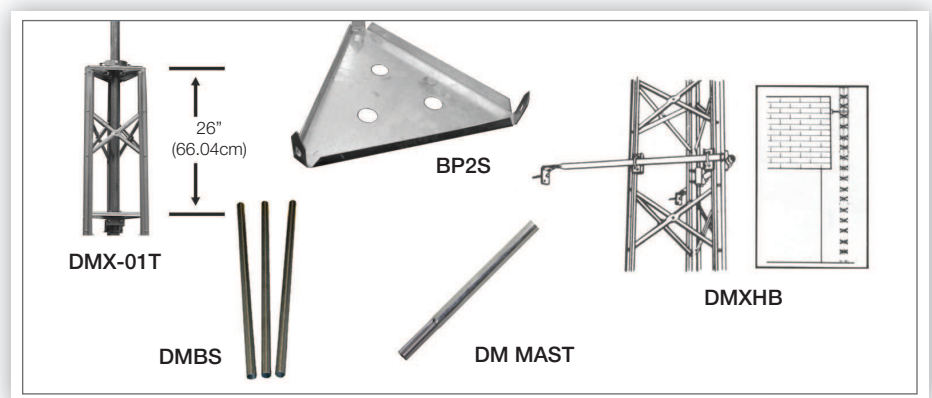
DMXB-02	20' (6.10 m)	DMXB-05	44' (13.41 m)
DMXB-03	28' (8.54 m)	DMXB-06	52' (15.85 m)
DMXB-04	36' (10.97 m)		

Note: For tower accessories or parts that may be ordered separately, please refer to the DMX Parts and Accessories Page.



*Towers have not been tested to be in compliance with other sections of CSA-S37-13.

**Tower load limits are based on survival, and cannot be stamped by a licensed engineer.



Wade Antenna's ongoing policy of continuing development may result in specification changes to its products.

WADE Antenna, Inc.

29 Sharp Road, Brantford, Ontario, N3T 5L8 Canada

Tel: 519.756.7157 Fax: 519.756.5056

1.800.463.1607

sales@wadeantenna.com

www.wadeantenna.com

SPEC0053_B01

Caution Notice

Please Read Carefully

Our published installation guidelines are for standard towers and mounting devices as specified. These guidelines are based on assumed soil and weather conditions that may or may not exist in your area and on the assumption that no damage has occurred or modifications made to the tower or mounting device.

A qualified structural engineer should be consulted prior to installing any tower or supporting structure.



WARNING!

Survey your installation site **NOW** to prevent your antenna or support from coming in contact with overhead powerlines. Caution should be used when climbing towers and support structures.

FAILURE TO EXERCISE CAUTION MAY RESULT IN SERIOUS INJURY OR DEATH.

Wade Antenna's ongoing policy of continuing development may result in specification changes to its products.